

thermoREFLECTIVE_E

TECHNICAL SPECIFICATION

Material: sleeves made of high cut-resistance fabric (level E according to ISO 13997 TDM), front and back with COOLMAX® EcoMadeFresh, 3M reflective elements

Colour: grey, yellow
Sizes: XS-3XL

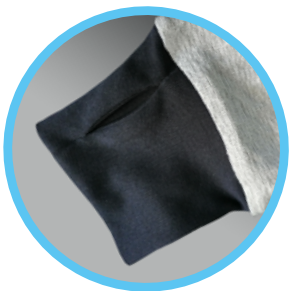


PROPERTIES

Sweatshirt with sleeves made of high cut-resistance fabric (level E according to ISO 13997 TDM). The fabric is extremely soft, flexible and pleasant to the touch compared to other anti-cut fabrics available on the market, guaranteeing protection and the highest level of comfort. The front and back of the sweatshirt made from anti-cut material, COOLMAX® EcoMadeFresh fabric, derived from 100% recycled plastic bottles. The system created by anti-cut material, COOLMAX® EcoMadeFresh fibres wicks sweat away from the wearer's skin to the outer layer of the fabric, where it evaporates faster than from any other material. The silver ions embedded in the anti-cut material, COOLMAX® EcoMadeFresh fibres reduce bacterial activity by 99%, so that the wearer avoids unpleasant clothing odours even after a long day's work. It is possible to design sweatshirts to meet individual needs /number and placement of elements protecting against cutting, HI-VIS elements, elements made of fabric ensuring ventilation and breathability/.

APPLICATION

Ceramic and glassworks, automotive industry, all kind of works with sharp-edged objects.



max 50 washing 60°C



EN 388:2016+A1:2018



2XX1E

Parameters for cut-resistant material:

Abrasion resistance	2
Cut resistance	X
Tear resistance	X
Puncture resistance	1
Resistance to cuts with sharp objects (TDM EN ISO 13997) (A to F)	E

PPE Regulation (EU) 2016/425 | EN 388:2016+A1:2018 - Cut resistant material parameters: 2XX1E